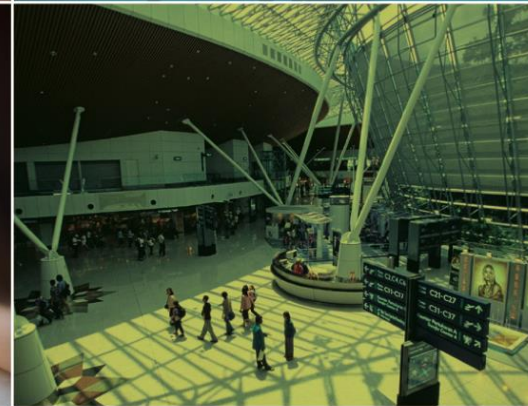
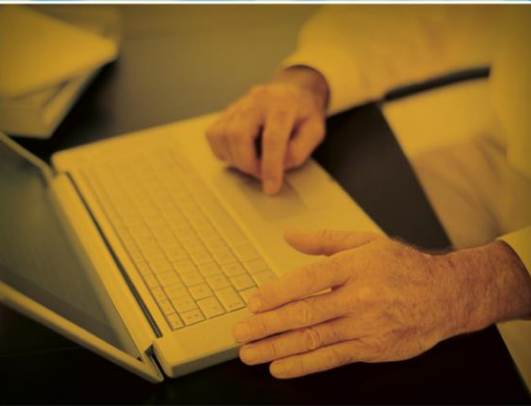
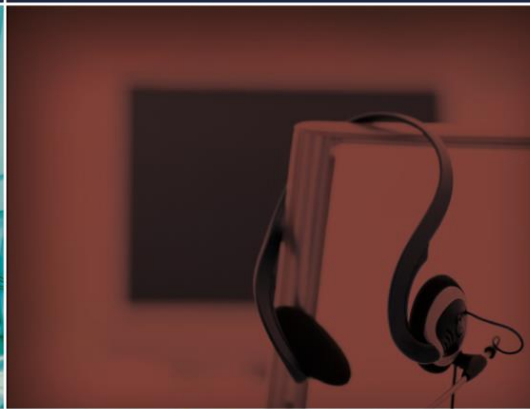




ETS Global Webinars Schedule 2018

Last update: Dec 2017

Version: 0.3.



CONTENTS

1. The *TOEIC*[®] Programme

- The *TOEIC*[®] Listening and Reading Test
- The *TOEIC*[®] Speaking and Writing Tests
- The *TOEIC Bridge*[™] Test
- The *TOEIC*[®] Tests - Institutional Programme Online
- The *TFI*[™] Test
- Propell[®] Teacher Workshops for the *TOEIC* Tests

2. The *TOEFL*[®] Family of Assessments

- The *TOEFL ITP*[®] Tests
- The *TOEFL Junior*[®] Tests
- The *TOEFL Primary*[®] Tests

3. *Workforce*[®] Assessment Solutions

- *WorkFORCE*[®] Assessment for Job Fit
- *WorkFORCE*[®] Assessment for Career Development
- *WorkFORCE*[®] Assessment for Job Fit and the *TOEIC* Programme

4. English Skill Building Tools

- *Criterion*[®] Online Writing Evaluation Service
- English Discoveries

5. Online Products

- English Learning Center (*TOEFL*[®] *Primary*[™] and *TOEFL Junior*[®])
- *TOEIC*[®] Official Learning Preparation Course (TOLPC)
- *TOEFL*[®] Practice Online (TPO)
- *TOEFL iBT*[®] Online Prep Course (TOPC)

6. Trademark Guidelines

To register, please go here: <https://goo.gl/forms/wxrq3R6WFadhApjM2>
For students only: <https://goo.gl/forms/Kx7zjVIicUPzkNOE2>

HR=Human Resource Manager, CO=Corporate Organization, AI=Academic Institution, LS=Language School

The <i>TOEIC</i> ® Programme			
Product	Title	Example Audience (not limited to these)	Date, Time CET
1. The <i>TOEIC</i> ® Programme	How to make decisions using the <i>TOEIC</i> ® Test scores	HR, decision makers in CO, AI, LS	18 th Jan, 2.00-3.00pm 22 nd Feb 10.00-11.00am
2. The <i>TOEIC</i> ® Programme	The case for a four-skill assessment of English-language proficiency	All except test-takers	13 th Feb 2.00-3.00pm 8 th Mar, 10.00-11.00am
3. The <i>TOEIC</i> ® Listening and Reading Test	TOEIC Listening and Reading Updates EMEA June 2018	All except test-takers	16 th Jan, 2.00-3.00pm 3 rd April, 2.00-3.00pm 8 th May, 2.00-3.00pm
4. The <i>TOEIC</i> ® Listening and Reading Test	TOEIC Listening and Reading Updates EMEA June 2018	Test-takers, Students	23 rd Jan, 2.00-3.00pm 5 th Apr, 10.00-11.00am 10 th May, 10.00-11.00am
5. The <i>TOEIC</i> ® Programme	How can you attract and identify quality candidates with the right English skills?	HR in CO, faculty in AI	15 th Feb 10.00-11.00am 27 th Mar, 2.00-3.00pm

6. The <i>TOEIC</i> [®] Programme	Better prepare graduates for workplace success to strengthen your reputation amongst employers	Faculty in AI, teachers, coordinators	13 th Mar 2.00-3.00pm 29 th Mar, 10.00- 11.00am
7. The <i>TOEIC</i> [®] Listening and Reading Test	How to prepare for the <i>TOEIC</i> [®] Listening and Reading Test	Test-takers, students	15 th Mar 10.00- 11.00am 17 th Apr, 2.00-3.00pm
8. The <i>TOEIC</i> [®] Listening and Reading Test	How to develop the students' Listening and Reading skills for better test performance	Teachers, trainers, LS, AI	10 th Apr, 2.00-3.00pm 19 th April, 10.00- 11.00am
9. The <i>TOEIC</i> [®] Speaking and Writing Tests	How ETS scores the <i>TOEIC</i> [®] Speaking and Writing Test responses	All	12 th Apr, 10.00-11.00 am 24 th Apr, 2.00-3.00pm
10. The <i>TOEIC</i> [®] Tests - Institutional Programme Online	Why should institutions assess English skills online? Watch a live demo!	AI, CO	17 th May 10.00- 11.00am 26 th April, 10.00- 11.00am
11. The <i>TOEIC Bridge</i> [™] Test	Validating <i>TOEIC Bridge</i> [™] scores against teacher ratings for vocational students	All except test-takers	24 th May, 10.00- 11.00am 14 th June 10.00- 11.00am
12. Propell [®] Teacher Workshops for the <i>TOEIC</i> Tests	Approaches to English language teaching and learning for effective results	Teachers, educators, pedagogical staff, trainers, teacher trainers, AI, LS	4 th April, 5.00-6.00pm 22 nd May, 2.00-3.00pm

The TOEFL® Family of Assessments

Product	Title	Audience	Date and Time
13. The TOEFL® Family of Assessments	Which assessment should I use to assess English Skills for academic purposes?	AI, LS, students, parents	12 th June 2.00-3.00pm
14. The TOEFL ITP® Tests	7 ways you can use the TOEFL ITP tests in your classroom.	Teachers, academic staff, AI, LS	21 st June 10.00am-11.00am
15. Teacher workshop for the TOEFL ITP® Tests	How to help your students improve their academic English language proficiency.	Teachers, academic staff, AI, LS	19 th June 2.00-3.00pm
16. The TOEFL Junior® Tests	Open up the world by learning and measuring English!	LS, AI, parents, teachers	3 rd July 10.00am-11.00am
17. The TOEFL Primary® Tests	Measure English skills to provide a foundation for young students' future success	LS, AI, parents, teachers	12 th July 2.00-3.00pm
18. The TOEFL Young Students Series Workshop	Ways to achieve greater teaching success with your English-language young students.	LS, AI, teachers	7 th August 10.00am-11.00am

The WorkFORCE® Suite of Assessments

19. WorkFORCE® Assessment for Job Fit	Are soft skills important in today's economy?	HR, Co, AI	5 th July 2.00-3.00pm
20. WorkFORCE® Assessment for Career Development	What do successful employees have in common?	HR, CO	20 th Feb 2.00-3.00pm
21. WorkFORCE® Assessment for Job Fit and the TOEIC Programme	Building a More Competitive Global WorkForce with soft skills and English language skills	All	22 nd March 10.00am-11.00am

English Skills building Tools

Product	Title	Audience	Date and Time
22. <i>Criterion</i> [®] Online Writing Evaluation Service	Live Demo: More teaching and learning. Less correcting	AI, LS, teachers	9 th August 10.00am-11.00am
23. English Discoveries	Live Demo: How to use English Discoveries to develop listening and reading skills	CO, AI, LS, teachers	28 th August 2.00-3.00pm

Online Products

24. English Learning Centers (<i>TOEFL Primary</i> [®] and <i>TOEFL Junior</i> [®])	Live Demo: Can interactive digital tools improve young students' skills in English?	AI, LS, teachers	9 th October 2.00-3.00pm
25. <i>TOEIC</i> [®] Official Learning Preparation Course (TOLPC)	Live Demo: how can teachers use <i>TOEIC</i> OLPC to help students prepare for the <i>TOEIC</i> Listening and Reading Test?	Teachers (see also session 5 above)	16 th Oct 2.00-3.00pm
26. <i>TOEIC</i> [®] Official Learning Preparation Course (TOLPC)	Live Demo: how can students use <i>TOEIC</i> OLPC to prepare for the <i>TOEIC</i> Listening and Reading Test?	Students (see also session 6 above)	25 th Oct 10.00-11.00am
27. <i>TOEFL</i> [®] Practice Online (TPO)	Live Demo: choose a test simulation or learning mode!	AI, LS, teachers, students	15 th Nov 2.00-3.00pm
28. <i>TOEFL iBT</i> [®] Online Prep Course (TOPC)	Live Demo: improve all four skills measured on the <i>TOEFL iBT</i> [®] test!	AI, LS, teachers, students	22 nd Nov 2.00-3.00pm
29. ETS Branding Guidelines	How can you use the Power of ETS's Brand Identity?	CMD, EPA Marketing and sales staff	9 th Dec 2.00-3.00pm

For more information, please email product-info@etsglobal.org