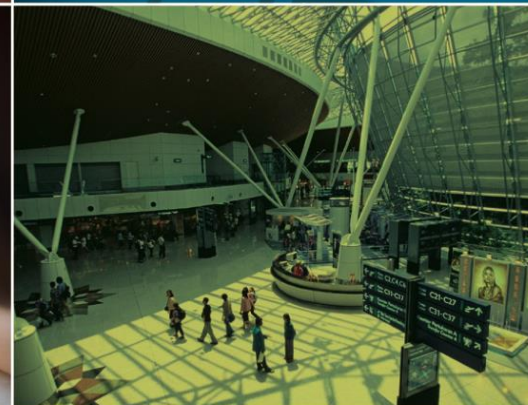
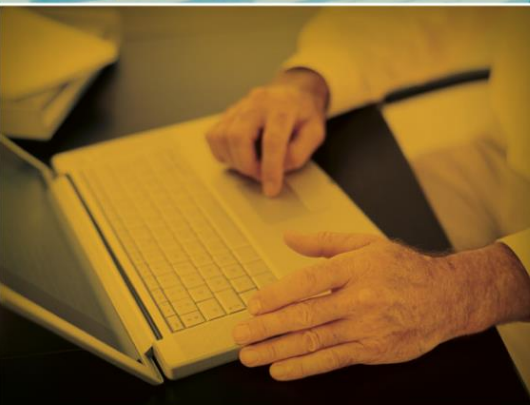
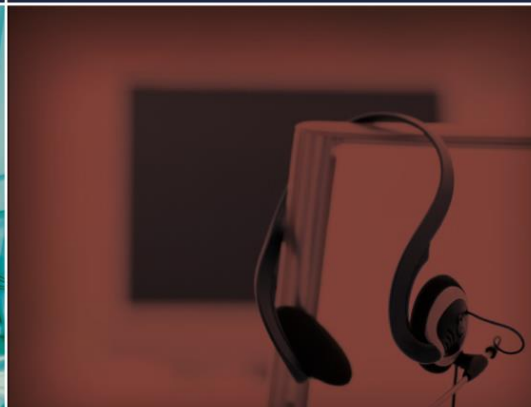




ETS Global Webinars Schedule 2018

Last update: Dec 2017

Version: 0.5.



CONTENTS

1. The *TOEIC*[®] Programme

- The *TOEIC*[®] Listening and Reading Test
- The *TOEIC*[®] Speaking and Writing Tests
- The *TOEIC Bridge*[™] Test
- The *TOEIC*[®] Tests - Institutional Programme Online
- The *TFI*[™] Test
- Propell[®] Teacher Workshops for the *TOEIC* Tests

2. The *TOEFL*[®] Family of Assessments

- The *TOEFL ITP*[®] Tests
- The *TOEFL Junior*[®] Tests
- The *TOEFL Primary*[®] Tests

3. *Workforce*[®] Assessment Solutions

- *WorkFORCE*[®] Assessment for Job Fit
- *WorkFORCE*[®] Assessment for Career Development
- *WorkFORCE*[®] Assessment for Job Fit and the *TOEIC* Programme

4. English Skill Building Tools

- *Criterion*[®] Online Writing Evaluation Service
- English Discoveries

5. Online Products

- English Learning Center (*TOEFL*[®] *Primary*[™] and *TOEFL Junior*[®])
- *TOEIC*[®] Official Learning Preparation Course (TOLPC)
- *TOEFL*[®] Practice Online (TPO)
- *TOEFL iBT*[®] Online Prep Course (TOPC)

6. Trademark Guidelines

For Professionals, to register, please click on the date you are interested in.

For students only, please go here:

<https://goo.gl/forms/Kx7zjVIIcUPzkNOE2>

HR=Human Resource Manager, CO=Corporate Organization, AI=Academic Institution, LS=Language School

The <i>TOEIC</i> ® Programme			
Product	Title	Example Audience (not limited to these)	Date, Time CET
1. The <i>TOEIC</i> ® Programme	How to make decisions using the <i>TOEIC</i> ® Test scores	HR, decision makers in CO, AI, LS	<u>18th Jan,</u> <u>2.00-3.00pm</u> <u>22nd Feb</u> <u>10.00-</u> <u>11.00am</u>
2. The <i>TOEIC</i> ® Programme	The case for a four-skill assessment of English-language proficiency	All except test-takers	<u>13th Feb 2.00-</u> <u>3.00pm</u> <u>8th Mar,</u> <u>10.00-</u> <u>11.00am</u>
3. The <i>TOEIC</i> ® Listening and Reading Test	<i>TOEIC</i> Listening and Reading Updates EMEA June 2018	All except test-takers	<u>16th Jan,</u> <u>2.00-3.00pm</u> <u>3rd April,</u> <u>2.00-3.00pm</u> <u>8th May, 2.00-</u> <u>3.00pm</u>
4. The <i>TOEIC</i> ® Listening and Reading Test	<i>TOEIC</i> Listening and Reading Updates EMEA June 2018	Test-takers, Students	<u>23rd Jan,</u> <u>2.00-3.00pm</u> <u>5th Apr,</u> <u>10.00-</u> <u>11.00am</u> <u>10th May,</u> <u>10.00-</u> <u>11.00am</u>
5. The <i>TOEIC</i> ® Programme	How can you attract and identify quality candidates with the right English skills?	HR in CO, faculty in AI	<u>15th Feb</u> <u>10.00-</u> <u>11.00am</u> <u>27th Mar,</u> <u>2.00-3.00pm</u>

6. The <i>TOEIC</i> [®] Programme	Better prepare graduates for workplace success to strengthen your reputation amongst employers	Faculty in AI, teachers, coordinators	<u>13th Mar</u> <u>2.00-3.00pm</u> <u>29th Mar,</u> <u>10.00-</u> <u>11.00am</u>
7. The <i>TOEIC</i> [®] Listening and Reading Test	How to prepare for the <i>TOEIC</i> [®] Listening and Reading Test	Test-takers, students	<u>15th Mar</u> <u>10.00-</u> <u>11.00am</u> <u>17th Apr,</u> <u>2.00-3.00pm</u>
8. The <i>TOEIC</i> [®] Listening and Reading Test	How to develop the students' Listening and Reading skills for better test performance	Teachers, trainers, LS, AI	<u>10th Apr,</u> <u>2.00-3.00pm</u> <u>19th April,</u> <u>10.00-</u> <u>11.00am</u>
9. The <i>TOEIC</i> [®] Speaking and Writing Tests	How ETS scores the <i>TOEIC</i> [®] Speaking and Writing Test responses	All	<u>12th Apr,</u> <u>10.00-11.00</u> <u>am</u> <u>24th Apr,</u> <u>2.00-3.00pm</u>
10. The <i>TOEIC</i> [®] Tests - Institutional Programme Online	Why should institutions assess English skills online? Watch a live demo!	AI, CO	<u>26th April,</u> <u>10.00-</u> <u>11.00am</u> <u>17th May</u> <u>10.00-</u> <u>11.00am</u>
11. The <i>TOEIC Bridge</i> [™] Test	Validating <i>TOEIC Bridge</i> [™] scores against teacher ratings for vocational students	All except test-takers	<u>24th May,</u> <u>10.00-</u> <u>11.00am</u> <u>14th June</u> <u>10.00-</u> <u>11.00am</u>
12. Propell [®] Teacher Workshops for the <i>TOEIC</i> Tests	Approaches to English language teaching and learning for effective results	Teachers, educators, pedagogical staff, trainers, teacher trainers, AI, LS	<u>4th April,</u> <u>5.00-6.00pm</u> <u>22nd May,</u> <u>2.00-3.00pm</u>

The *TOEFL*® Family of Assessments

Product	Title	Audience	Date and Time
13. The <i>TOEFL</i> ® Family of Assessments	Which assessment should I use to assess English Skills for academic purposes?	AI, LS, students, parents	<u>12th June</u> <u>2.00-3.00pm</u>
14. The <i>TOEFL ITP</i> ® Tests	7 ways you can use the <i>TOEFL ITP</i> tests in your classroom.	Teachers, academic staff, AI, LS	<u>21st June</u> <u>10.00am-</u> <u>11.00am</u>
15. Teacher workshop for the <i>TOEFL ITP</i> ® Tests	How to help your students improve their academic English language proficiency.	Teachers, academic staff, AI, LS	<u>19th June</u> <u>2.00-3.00pm</u>
16. The <i>TOEFL Junior</i> ® Tests	Open up the world by learning and measuring English!	LS, AI, parents, teachers	<u>3rd July</u> <u>10.00am-</u> <u>11.00am</u>
17. The <i>TOEFL Primary</i> ® Tests	Measure English skills to provide a foundation for young students' future success	LS, AI, parents, teachers	<u>12th July</u> <u>2.00-3.00pm</u>
18. The <i>TOEFL Young Students Series</i> Workshop	Ways to achieve greater teaching success with your English-language young students.	LS, AI, teachers	<u>7th August</u> <u>10.00am-</u> <u>11.00am</u>

The *WorkFORCE*® Suite of Assessments

19. <i>WorkFORCE</i> ® Assessment for Job Fit	Are soft skills important in today's economy?	HR, Co, AI	<u>5th July</u> <u>10.00am-</u> <u>11.00am</u>
20. <i>WorkFORCE</i> ® Assessment for Career Development	What do successful employees have in common?	HR, CO	<u>20th Feb</u> <u>10.00am-</u> <u>11.00am</u>
21. <i>WorkFORCE</i> Assessment for Job Fit and the TOEIC Programme	Building a More Competitive Global <i>WorkFORCE</i> with soft skills and English language skills	All	<u>22nd March</u> <u>10.00am-</u> <u>11.00am</u>

English Skills building Tools

Product	Title	Audience	Date and Time
22. <i>Criterion</i> [®] Online Writing Evaluation Service	Live Demo: More teaching and learning. Less correcting	AI, LS, teachers	<u>9th August</u> <u>10.00am-</u> <u>11.00am</u>
23. English Discoveries	Live Demo: How to use English Discoveries to develop listening and reading skills	CO, AI, LS, teachers	<u>28th August</u> <u>2.00-</u> <u>3.00pm</u>

Online Products

24. English Learning Centers (<i>TOEFL Primary</i> [®] and <i>TOEFL Junior</i> [®])	Live Demo: Can interactive digital tools improve young students' skills in English?	AI, LS, teachers	<u>9th October</u> <u>2.00-</u> <u>3.00pm</u>
25. <i>TOEIC</i> [®] Official Learning Preparation Course (TOLPC)	Live Demo: How can teachers use <i>TOEIC Official Learning and Preparation Course</i> to help students prepare for the <i>TOEIC</i> Listening and Reading Test?	Teachers (see also session 5 above)	<u>16th Oct</u> <u>2.00-</u> <u>3.00pm</u>
26. <i>TOEIC</i> [®] Official Learning Preparation Course (TOLPC)	Live Demo: How can students use <i>TOEIC Official Learning and Preparation Course</i> to prepare for the <i>TOEIC</i> Listening and Reading Test?	Students (see also session 6 above)	<u>25th Oct</u> <u>10.00-</u> <u>11.00am</u>
27. <i>TOEFL</i> [®] Practice Online (TPO)	Live Demo: Choose a test simulation or learning mode!	AI, LS, teachers, students	<u>15th Nov</u> <u>2.00-</u> <u>3.00pm</u>
28. <i>TOEFL iBT</i> [®] Online Prep Course (TOPC)	Live Demo: Improve all four skills measured on the <i>TOEFL iBT</i> [®] test!	AI, LS, teachers, students	<u>22nd Nov</u> <u>2.00-</u> <u>3.00pm</u>
29. ETS Branding Guidelines	How can you use the Power of ETS's Brand Identity?	CMD, EPA Marketing and sales staff	<u>9th Dec</u> <u>2.00-</u> <u>3.00pm</u>

For more information, please email product-info@etsglobal.org